



TECHNICAL PACKING SOLUTIONS



PROTECTION

Tissue paper
Glassine paper
Silk paper
Bullkraft
Carton cases



WOODEN CASES

Controlcase
Climacase
Museumcase
Commercialcase
Cases for three dimensional objects
Cases for heavy objects
Handcarry for couriers
Multiple rail case
Fittings
Other solutions



TRAVEL CASES

PROTECTION



- **Tissue paper**

Polypropilene (Celulose), acid-free, Ph neutral (7).
Polythene (plastic material), which gives consistency.

- **Glassine paper**

Acid-free with a minimum Ph value of between 6-8.
Salt-free, no additives, not chemical treatments.

- **Silk paper**

Acid-free and Ph neutral.

- **Bullkraft**

A very low Ph, high acidity. Requires previous protection with one of the previous papers.

- **Carton cases**

Corrugated carton with single, double and triple canals.
Requires previous protection with one of the previous papers.

CONTROLCASE™

■ Exterior

Wooden panels of Okume/calabo.

10 mm thickness on base and cover

22 mm on sides

15 or 20 mm in PVC low-friction coasters.

Reinforced with Swedish pine .

Joints covered with rubber.

Stainless steel locks, neprene fitted joins, wooden handles.

Double lacquer of fire-proof paint

Interior

20 mm thermal isolation, extruded polystyrene with grey felt cloth.

polyethylene foam bands of 100 x 35 mm, 25 Kg. de densidad.

Instalation of a double-reading data-logger to register environmental activity and point of vibration.



CLIMACASE™



■ Exterior

Wooden panelling of Okume/calabo.

10 mm thickness on base and cover

20 mm on sides

20 mm on coasters

Covered with formica.

Reinforced with Swedish pine.

Top and lateral joins covered with rubber.

Multiuse latches and hexagonal locks .

Special handles with spring mechanism.

■ Interior

50 mm thermal cover isolation, Polystyrene

Self-extinguishing.

Absorbs only 0,1 % humidity.

Polyethylene foam bands of 100 x 50 mm. 25 Kg. density

MUSEUMCASE™



■ Exterior

Wooden panelling of Okume/calabo.

10 mm thickness on top and base

22 mm on sides

15 or 20 mm on coasters

Reinforced with Swedish pine.

Top and side joins covered with rubber.

Stainless steel locks and fittings, neoprene joins and wooden handles

■ Interior

Thermal isolation covering of 30 - 60mm of polystyrene.

Polyethylene foam bands of 100 x 35 mm.

25 Kg. density

COMMERCIALCASE™



■ Exterior

Wooden panelling of Okume/calabo.

10 mm thickness on base and cover

15 mm on sides

Reinforced with Swedish pine.

Top and side joins covered with rubber.

Stainless steel fittings and neoprene joins on cover.

Wooden handles.

■ Interior

Polystyrene thermal isolation layer of 30mm.

Polyethylene foam bands of 100 x 20mm. 25 Kg. Density.

THREE-DIMENSIONAL OBJECT CASE



■ Exterior

The same technical characteristics as the Climacase, Museumcase y Commercialcase, depending on the client's choice.

Angle opening.

■ Interior

The same technical characteristics as the Climacase, Museumcase y Commercialcase, depending on the client's choice.

The support employed, besides possessing the characteristics previously described, also respond to the measurements and exact requirements of each piece:

Rails or guillotine.

Cushioned slats.

Hollowing of polystyrene or polythene foam.

HEAVY-OBJECT CASE



■ Exterior

The same technical characteristics as the Climacase, Museumcase y Commercialcase, depending on the client's choice.

Pallet base.

Topa and lateral opening (4 sides).

■ Interior

The same technical characteristics as the Climacase, Museumcase y Commercialcase, depending on the client's choice.

The support employed, besides possessing the characteristics previously described, also respond to the measurements and exact requirements of each piece:

Rails or guillotine.

Cushioned slats.

Hollowing of polystyrene or polyethylene foam.

HANDCASE FOR COURIER



■ Exterior

Wooden panelling of Okume/calabo.

Cover joined to the body of the case by hinges.

Handle for easy manipulation.

Security locks.

■ Interior

Thermal isolation layer of polystyrene depending on dimensions

Polyethylene foam bands depending on dimensions of the piece. Variable density.

MULTIPLE RAIL CASE



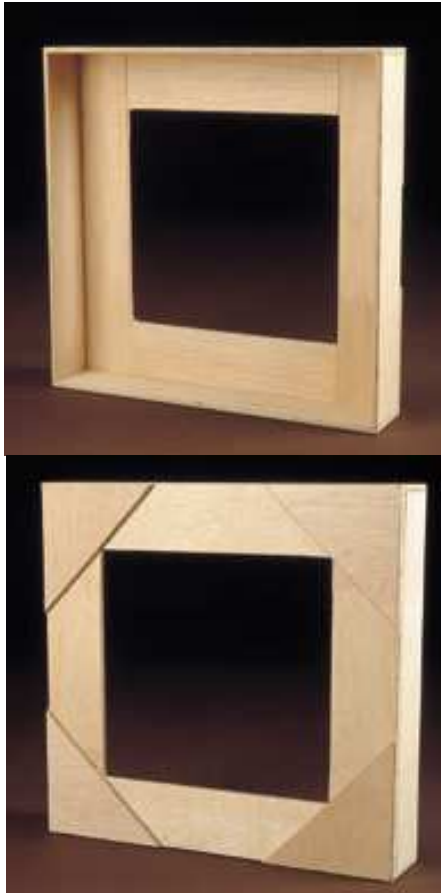
- **Exterior**

The same characteristics as the Climacase, Museumcase and Commercialcase, depending on the client's choice.

- **Interior**

The same characteristics as the Climacase, Museumcase and Commercialcase, depending on the client's choice. The inside has rails lined with felt to secure the pieces.

TRAVEL FRAME



- **Exterior**

Wooden panelling of Okume/calabo, 10 cm larger than the dimensions of the piece; polished edges..

- **Interior**

The same technical characteristics.

Recommendation:

Given the nature of this systems, it is convenient for use in national or local movements.

FITTINGS



■ Exterior

Palletized base

Total aperture of all sides of case.

Paint

Personalized paint and colours

Varnishing

Retractable handles

Latches

Latches for seals

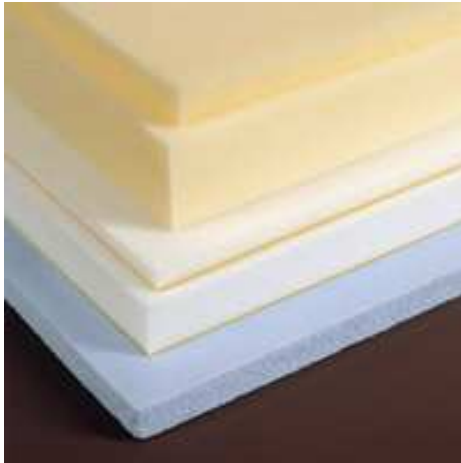
Locks with keys

Metalic locks

Numbered seals

Wheels

FITTINGS



■ Interior

- Tablex base
- Plastazote base
- Foam base
- Carpetted base
- Interior trays
- Interior drawers
- Double isolation
- Rails
- Guillotines
- Slats
- Foam filling
- Plastazote filling
- Carton separators
- Feather-board separators
- Shockwatch
- Tiltwatch
- Carton tubing

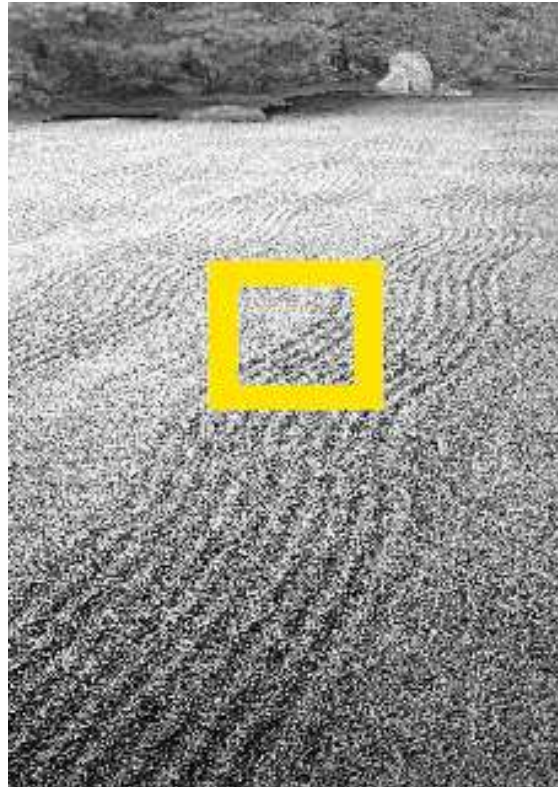
OTHER SOLUTIONS



Tti offers technical solutions made to the clients needs.

Other protection and packing systems are:

- Climabox
- Large format packing systems
- Fabric packing
- Others



HARMONY IN MOVEMENT